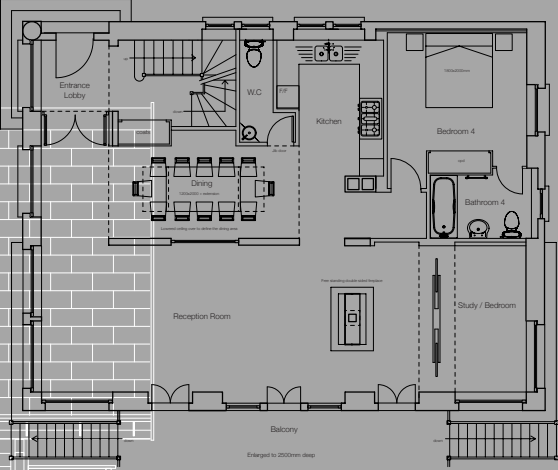




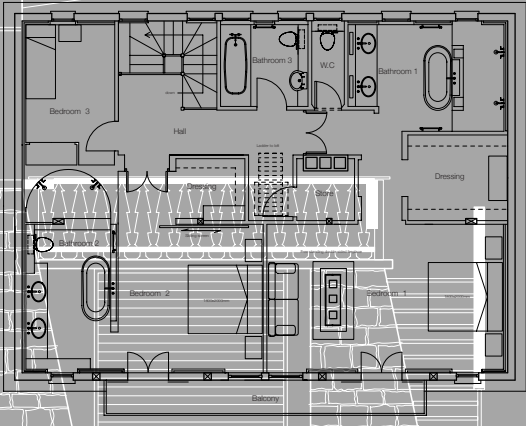
LES CLARINES CHAMONIX, FRANCE

The chalet was built in the late 1930s and had been little altered since. Its architect had created a well-proportioned and carefully detailed exterior, but after nearly seventy years the internal layout was no longer practical. Rearrangement and extension now provide a large open living/dining/kitchen space on the ground floor giving onto the new south-facing terrace with views from the elevated site directly towards Mont Blanc. On the first floor are four bedrooms each with bathroom or shower room, and the lower ground floor comprises two further bedrooms and bathrooms, a large playroom, and an integral double garage.

LES CLARINES CHAMONIX, FRANCE



GROUND FLOOR PLAN



FIRST FLOOR PLAN