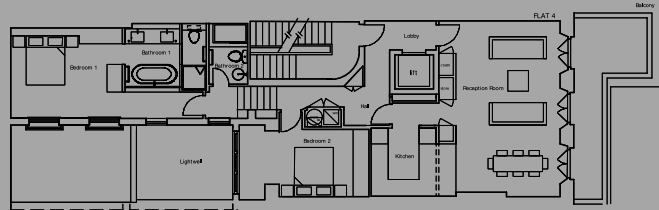




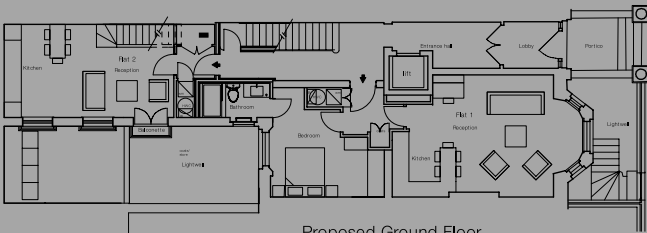
18 ELVASTON PLACE LONDON SW7

This typical large Kensington terraced house, subdivided into more than twenty small flats, presented several challenges. Careful study of the local planning policies and negotiations with the council's planning department yielded an additional storey, an enlarged rear extension and re-configuration of the property as a much smaller number of large – and more valuable – flats/maisonettes.

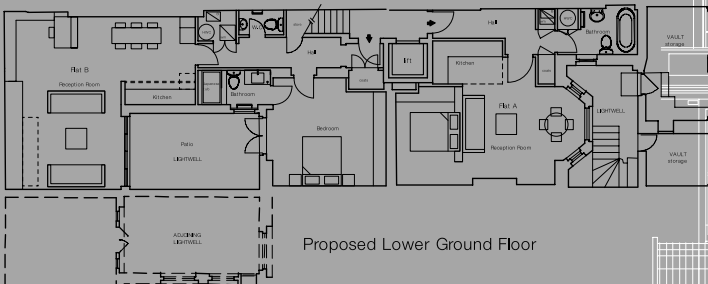
18 ELVASTON PLACE LONDON SW7



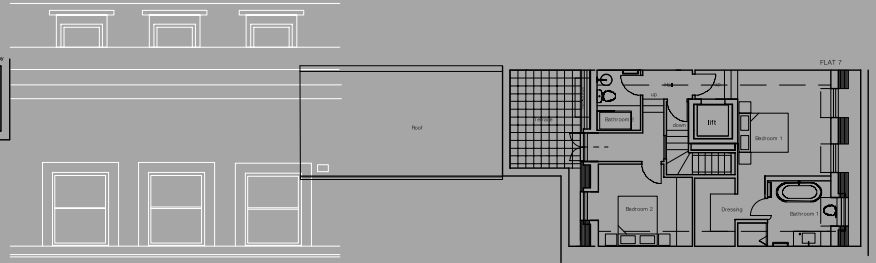
Proposed First Floor



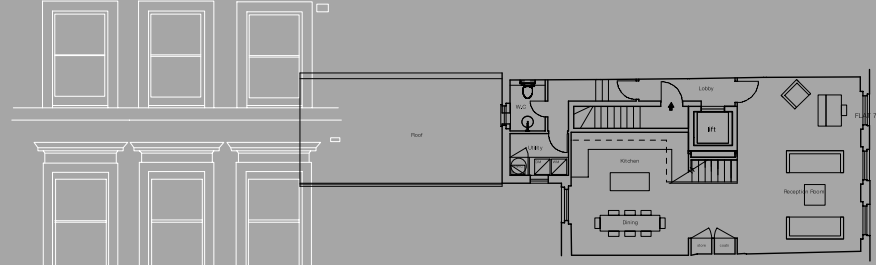
Proposed Ground Floor



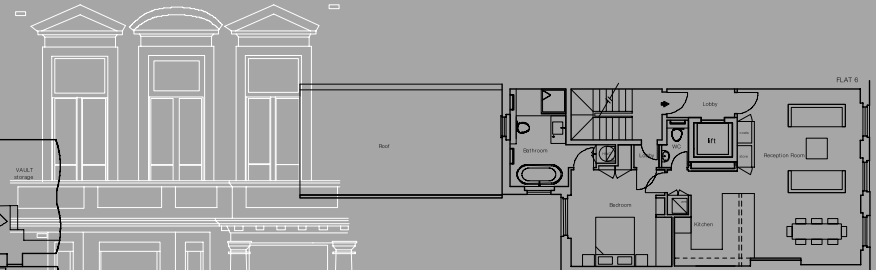
Proposed Lower Ground Floor



Proposed Fifth Floor



Proposed Fourth Floor



Proposed Second / Third Floor

